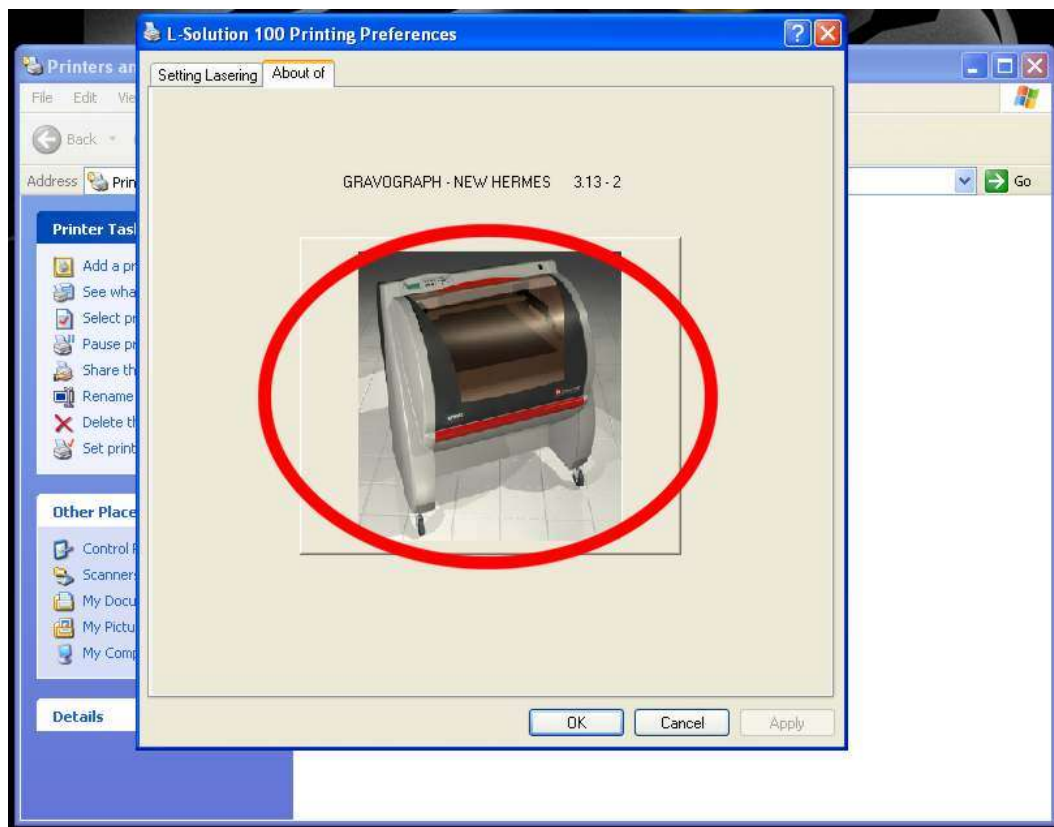


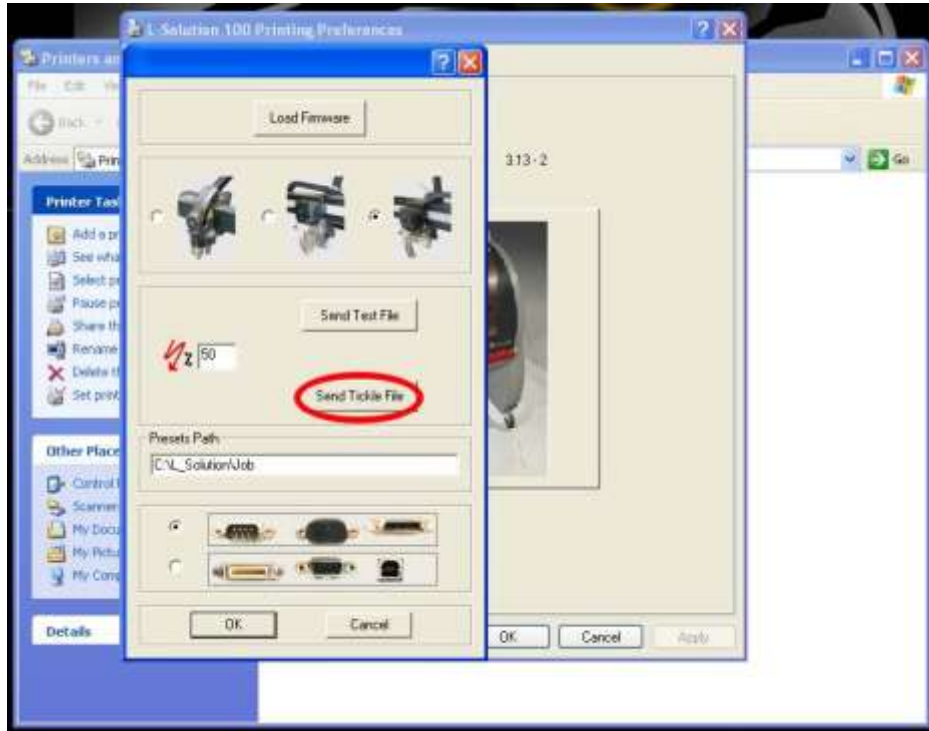
How to set the “tickle” for Gravograph LS100 lasers

Before getting started, you will need an 8” x 8” piece of laserable material. It is important that this material be very sensitive to lasering; heavy paper (such as the back of our catalog) works well.

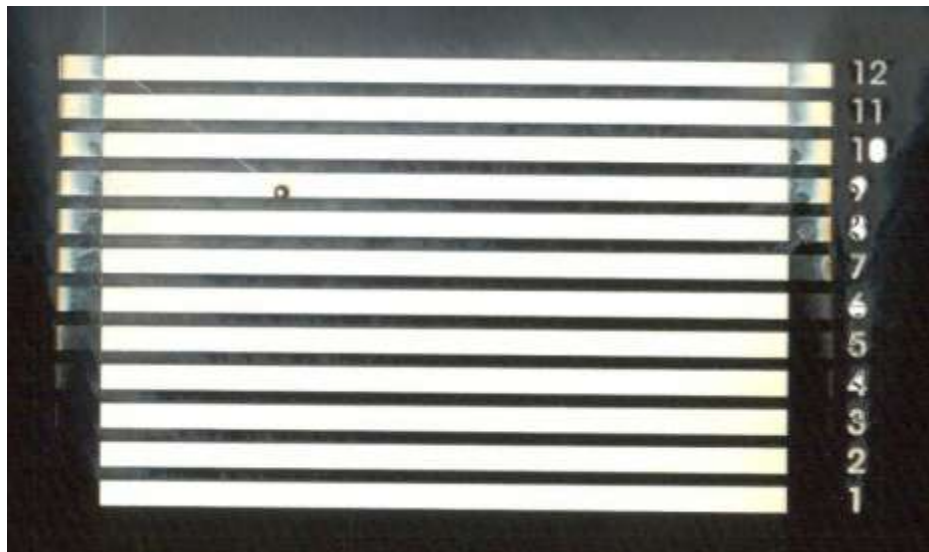
1. Go to the Start menu, pick Printers and Faxes
2. Right-click on L-Solution 100 (or LS100, may be named something similar)
3. Pick Printing Preferences from the menu that appears
4. Click on the “About of” tab at the top
5. Click on the picture of the laser machine



6. Click on the Send Tickle File button – this will send a job to the laser



7. Place your material in the top left corner of the laser and run the job
8. The laser job will consist of 12 numbered bars, look for the bar that just barely does not have any "extra" bars to the left and right and note its number.



In this example (lasered on the back of a PGD 2007 catalog), bar number 3 is the best quality

9. Turn off the laser

10. Turn on the laser while holding down the “X” button to access the setup menu



11. Press the down arrow once to highlight the “tickle” option



12. Press the “☑” button to select (the green light will blink very rapidly)



13. Press the Autofocus and Red Dot Pointer buttons at the same time to confirm selection



14. Use the up and down arrows to change the setting to match the number you selected in step 8



15. Press the “☑” button to save



16. Turn off the laser, and then turn on normally.