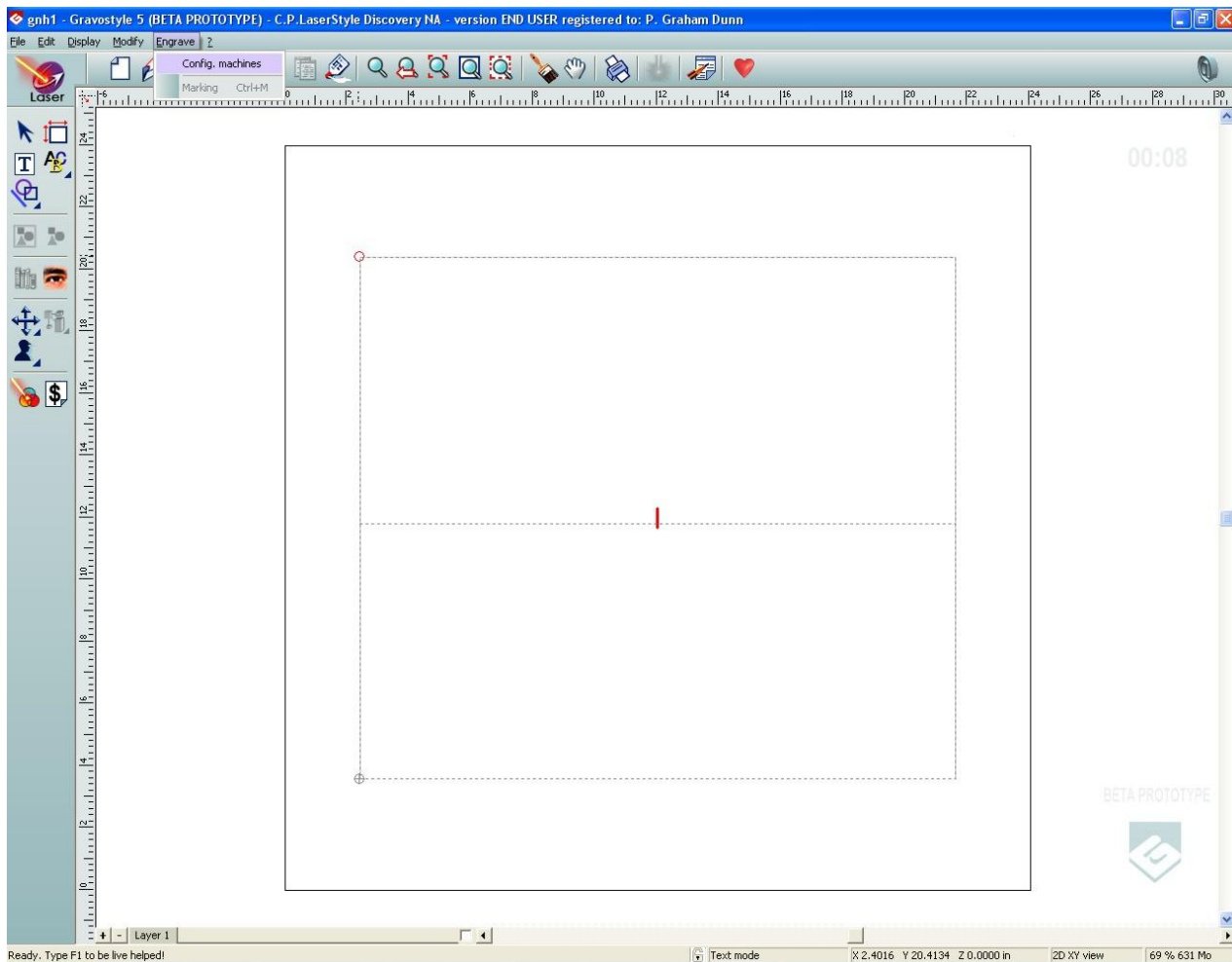
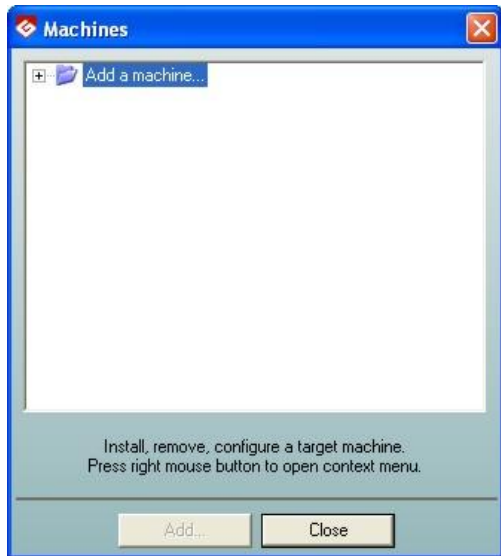


Gravostyle Software installation

1. Insert the Laser Gifts DVD
2. Browse to My Computer, the dvd drive (often D:), Gravostyle, and double-click on Setup.exe
3. Click "Next" a few times to proceed through the installation
4. Plug the yellow "dongle" into a free USB port
5. Plug the USB cable into the port marked "Laser" on your computer (if none is marked, then just use a free port)
6. Plug the other end of the USB cable to the laser, and turn on the laser.
7. Start the Gravostyle software, being sure to pick the "Laser Mode" icon
8. In the software, go to the Engrave menu and pick Config. Machines



9. Click Add a machine, Marking Laser Machine, L-Solution 100 and then click Add



10. Double click Add in Windows



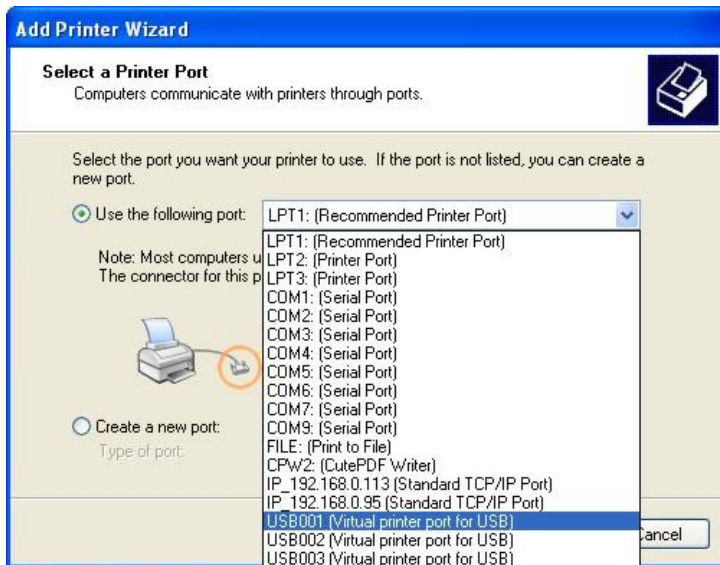
11. This will bring up the Add Printer Wizard



12. Click Next to get started, then select Local printer and deselect “Automatically detect”



13. Click the dropdown next to Use the following port and select USB001



14. Click Have Disk



15. Click Browse



16. Browse to C:\GravoStyle5400\DRIVER\LSolution 5.00-3 and select the glaser file



17. Click Ok

18. Click Next



19. Pick Replace existing driver if prompted



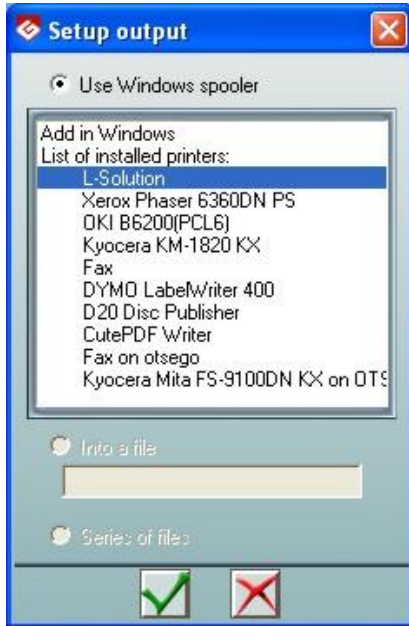
20. On the next three screens, Set as Default printer, Do Not Share, and do not print a test page



21. After clicking Finish, it will take a little bit for the computer to install. If you get a warning, pick Continue Anyway



22. When the printer wizard is complete, you should see L-Solution under the list of installed printers



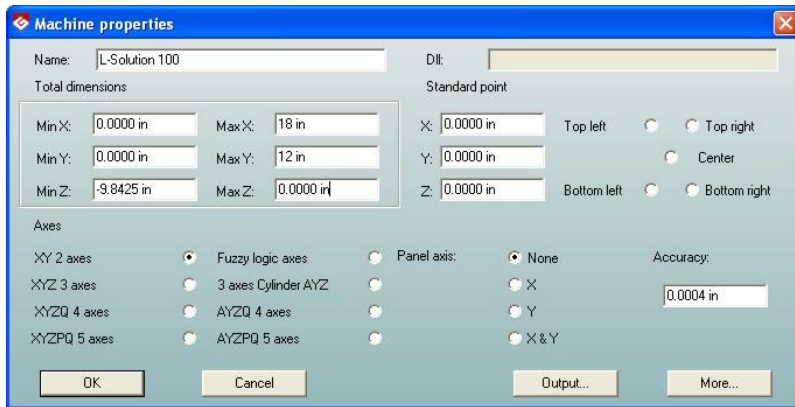
23. Double click on L-Solution and pick the bottom Communication Card and 30 Watts laser power



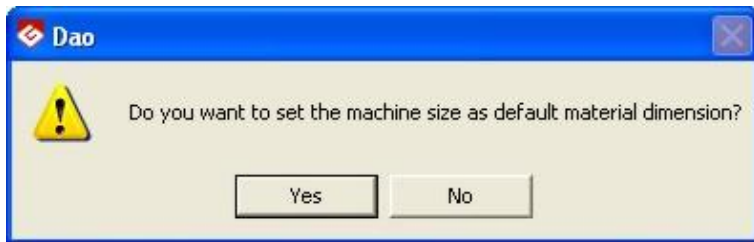
24. Select L-Solution, and click the green checkmark



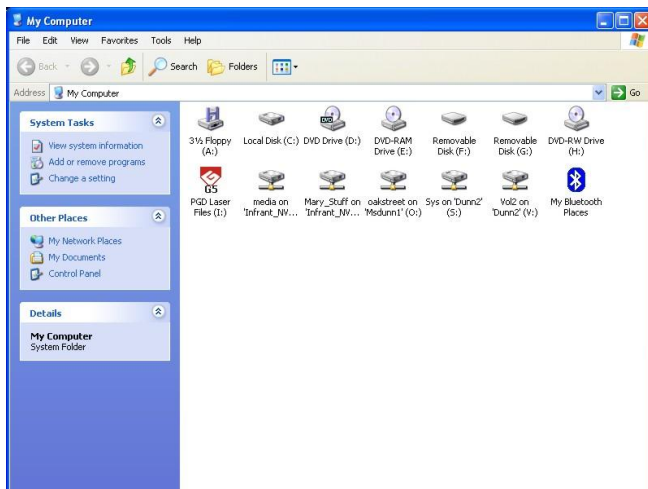
25. Change the Max X to 18 in and Max Y to 12 in, then click Ok



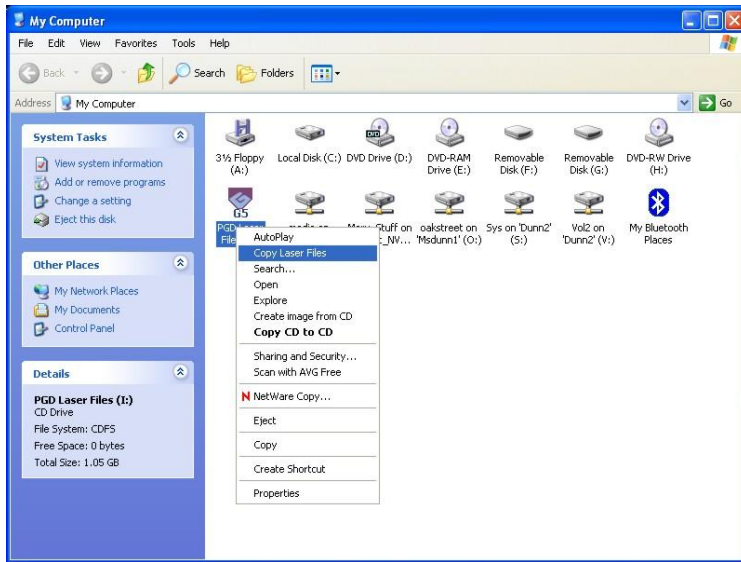
26. If prompted to set machine size as default, pick Yes



27. Close out the Gravostyle software and open My Computer



28. Right click on the drive containing the Laser Gifts cd and pick Open



29. Locate the “Copy_Files” file, and double click to run it.

30. Open the Windows Control Panel, Fonts, and install all the fonts found on the CD in the “PGD Laser Fonts” directory

31. Your laser should be set up. Open any job and send it to the laser as a test, if the laser beeps and displays the file name, you’re ready to go.

32. If you need support, please call 1-800-828-2105 x5025