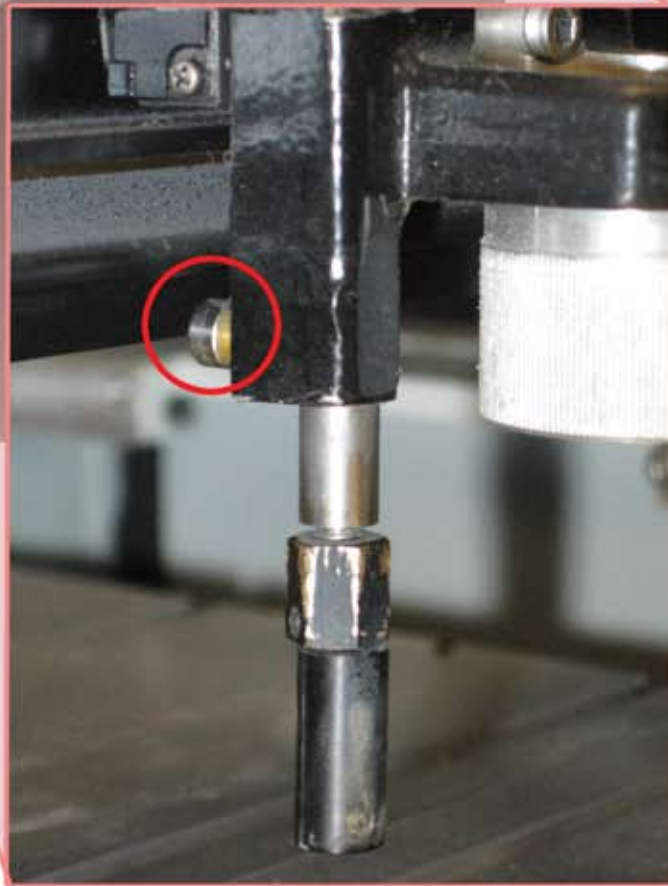
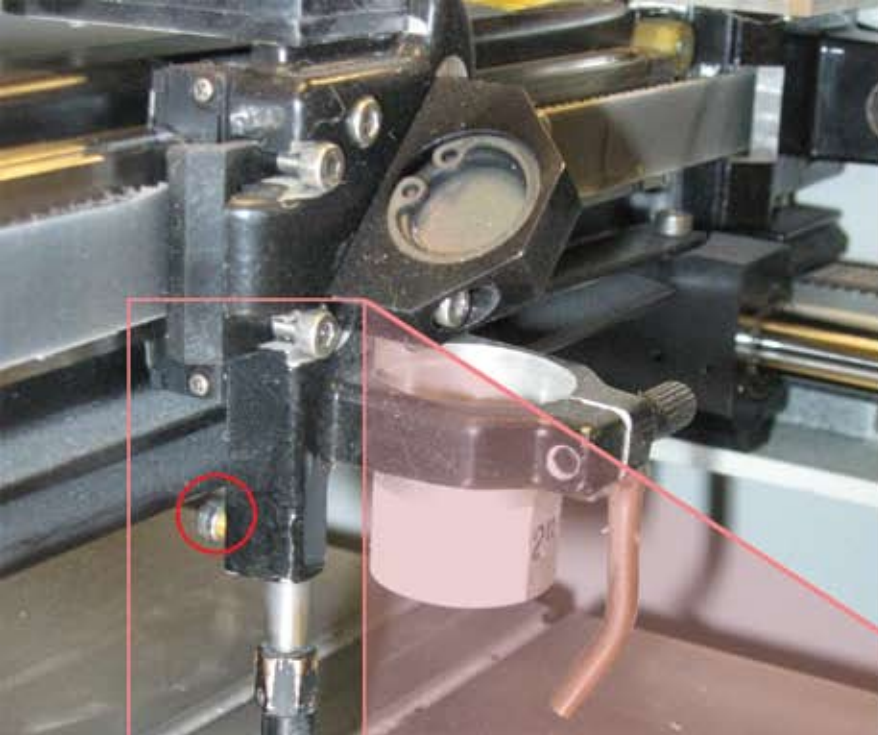


Auto-Focus Actuator Screw



This is a small screw with a brass spacer ring. It screws into the back side of the focusing rod. If it falls out, you can screw it back in by hand, or with a 2.5mm allen wrench that came with your laser.



First, turn your laser on and lower the tray to the bottom (This is done by pushing the “Z” button on the machine, then holding the down arrow to lower the tray.) Second, turn the machine off, and gently pull the bar that holds the laser head forward halfway. Next, pull the laser head to the right of the bar.

Slide the brass ring onto the screw if it has fallen off, and reach behind the laser head and screw it in. You can tighten the screw further with an allen wrench. Be very careful not to overtighten, as this could strip the screw.