

Replacing the Keypad Membrane (Button Pad)

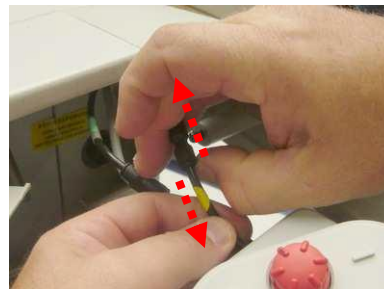
Remove the right-side inside plastic guard by removing the three screws indicated in red and loosening the one indicated in blue. Close the lid nearly all the way to get past the notch (in green) to remove the guard.



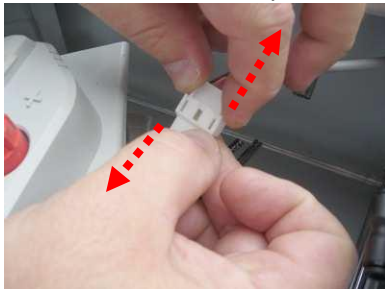
With a T10 torx (or short flathead screwdriver), loosen the screws that secure the Control Panel Assembly. Once loosened, the panel can slide leftwards towards the center of the machine.



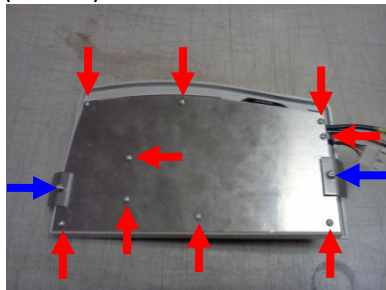
Press in on the rings of the air-assist tube couplers while pulling on the tube to disconnect them.



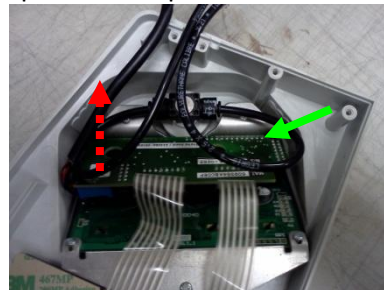
Disconnect the white coupler. The Control Panel Assembly is now free.



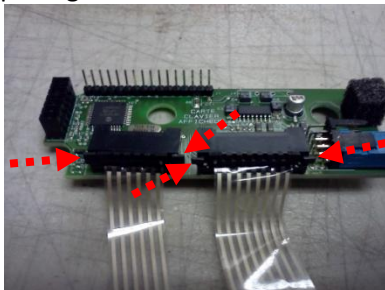
Remove the nine Phillips screws (in red) and the two T10 torx screws (in blue) to remove the metal back.



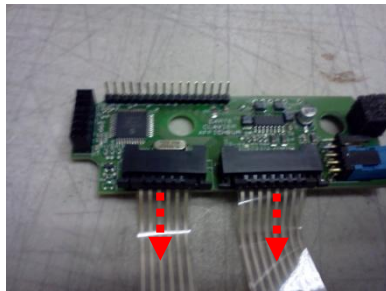
Remove the smaller daughter board from the larger board by pulling them apart – the boards are connected by a row of pins (green arrow). Pull the button pad straight up out of the plastic.



Release the ribbon cables by pinching the side clips in and pulling forward.



With the clips released, pull the ribbon cables out.



Attach the new button pad ribbon cables by inserting the end, checking that the cable is centered in the plastic connectors, and pushing the connectors in and ensuring the side clips click into place. Work exactly in reverse to reassemble, taking care to get the pins lined up when placing the daughter board, and when placing the back metal cover to ensure the ribbon cables do not get pinched.